

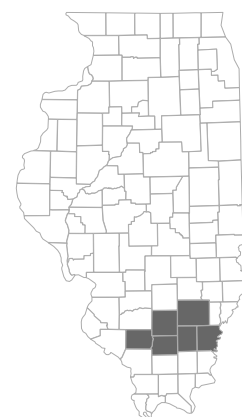
The Economic Value of Rend Lake College



Rend Lake College (RLC) creates a significant positive impact on the business community and generates a return on investment to its major stakeholder groups—students, taxpayers, and society. Using a two-pronged approach that involves an economic impact analysis and an investment analysis, this study calculates the benefits received by each of these groups. Results of the analysis reflect fiscal year (FY) 2023-24.

Economic impact analysis

In FY 2023-24, RLC added **\$210.3 million** in income to the District 521* economy, a value approximately equal to **3.2%** of the region's total gross regional product (GRP). Expressed in terms of jobs, RLC's impact supported **3,140 jobs**. For perspective, the activities of RLC and its students support **one out of every 21 jobs** in District 521.



District 521, Illinois

* For the purposes of this analysis, District 521 is comprised of Franklin, Hamilton, Jefferson, Perry, Wayne, and White Counties.

Operations spending impact

- RLC employed 364 full-time and part-time faculty and staff. Payroll amounted to \$9.6 million, much of which was spent in the region on groceries, mortgage and rent payments, dining out, and other household expenses. The college spent another \$14.6 million on its expenses related to facilities, supplies, and professional services (excluding construction).
- The net impact of the college's operations spending added **\$9.5 million** in income to the regional economy in FY 2023-24.

Construction spending impact

- RLC invests in capital projects each year to maintain its facilities, create additional capacities, and meet its growing educational demands, generating a short-term infusion of spending and jobs in the regional economy.
- The net impact of RLC's construction spending in FY 2023-24 was **\$490.4 thousand** in added income for District 521.

Student spending impact

- Around 20% of students attending RLC originated from outside the region. The majority of these students relocated to District 521. In addition, some in-region students, referred to as retained students, would have left District 521 for other educational opportunities if not for RLC. These relocated and retained students spent money on groceries, mortgage and rent payments, and other living expenses at businesses in the region.
- The expenditures of relocated and retained students in FY 2023-24 added **\$6.2 million** in income to the District 521 economy.

Alumni impact

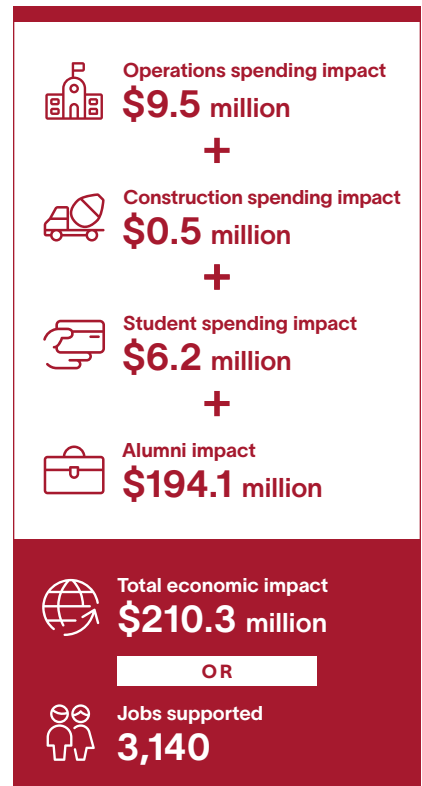
- Over the years, students have studied at RLC and entered or re-entered the workforce with newly acquired knowledge and skills. Today, thousands of these former students are employed in District 521.
- The net impact of RLC's former students currently employed in the regional workforce amounted to **\$194.1 million** in added income in FY 2023-24.

Investment analysis

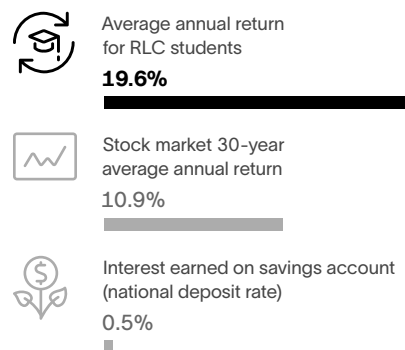
Student perspective

- RLC's FY 2023-24 students paid a present value of **\$2.9 million** to cover the cost of tuition, fees, and supplies. They also forwent a value of **\$4.0 million** in time and money had they been working instead of attending college.
- In return for their investment, students will receive a cumulative present value of **\$52.0 million** in increased earnings over their working lives. This translates to a return of **\$7.50** in higher future earnings for every dollar students invest in their education. Students' average annual rate of return is **19.6%**.

Impacts created by RLC in FY 2023-24



Students see a high rate of return for their investment in RLC



Source: Forbes' S&P 500, 1994-2025; FDIC.gov, January 2024






Taxpayer perspective

- Taxpayers provided RLC with **\$27.1 million** of funding in FY 2023-24. In return, they will benefit from added tax revenue, stemming from students' higher lifetime earnings and increased business output, amounting to **\$18.3 million**. A reduced demand for government-funded services in Illinois will add another **\$2.3 million** in benefits to taxpayers.
- Total taxpayer benefits amount to **\$20.6 million**, the present value sum of the added tax revenue and public sector savings.

Social perspective

- In FY 2023-24, Illinois invested **\$32.2 million** to support RLC. In turn, the Illinois economy will grow by **\$186.1 million** over the course of students' working lives. Society will also benefit from **\$5.8 million** of public and private sector savings.
- For every dollar invested in RLC in FY 2023-24, people in Illinois will receive **\$6.00** in return, for as long as RLC's FY 2023-24 students remain active in the state workforce.

For every \$1...	
	Students gain in higher lifetime earnings \$7.50
	Society gains in added income and social savings \$6.00
In total...	
	Taxpayers gain in added tax revenue and public sector savings \$20.6 million

